



Enterprise Reporting Solution

## Argos 6.13.1 Release Guide

*Product version 6.13.1*

*Last updated 1/29/2026*

# Trademark, Publishing Statement, and Copyright Notice

---

© 1998-2026 Evisions. All rights reserved.

This software and related documentation are provided under a license agreement containing restrictions on use and disclosure and are protected by intellectual property laws. No part of this document may be reproduced, stored in or introduced into a retrieval system, or transmitted in any form or by any means (electronic, mechanical, photocopying, recording, or otherwise), or for any purpose, without the express written permission of Evisions.

The information contained herein is subject to change without notice and is not warranted to be error-free. Product features referenced herein for a period of time may not match product contents. Evisions does not warrant that the functions contained in the software will meet your requirements or that the operation of the software will be uninterrupted or error free. Evisions reserves the right to make changes and/or improvements in the software without notice at any time.

This software and documentation may provide access to or information on content, products, and services from third parties. Evisions and its affiliates are not responsible for and expressly disclaim all warranties of any kind with respect to third-party content, products, and services. Evisions and its affiliates will not be responsible for any loss, costs, or damages incurred due to your access to or use of third-party content, products, or services. Evisions does not endorse the content or developer of any products or web sites mentioned.

All information in this guide is designed for instructional purposes only. Evisions makes no guarantees regarding the accuracy or performance of any techniques used in this guide. Software configurations and environments may vary, and some techniques used in this guide may not operate efficiently under all configurations. This guide may contain examples of various technologies or products, which are the sole property and responsibility of their creators.

Trademarks are the property of the respective owners for any products mentioned herein.

# Table of Contents

---

<b>What's New in Argos 6.13.1?</b> .....	<b>4</b>
MAPS and Argos Updates .....	4
Product versions .....	4
Installation .....	5
1. Prepare test environment and ensure current backup .....	5
2. Check for updates .....	5
3. Allow update process to complete .....	5
4. Verify the latest version is installed .....	5
<b>Argos 6.13.1 Release Notes</b> .....	<b>6</b>
<b>Getting Help</b> .....	<b>8</b>

# What's New in Argos 6.13.1?

---

Evisions is pleased to announce the release of Argos version 6.13.1, which includes the following changes:

## Argos Enhancements:

- More specific error messaging for Argos X DataBlocks without an assigned Data Connection.

## Argos Resolved Issues:

- Argos X and AWW folders containing numerous subfolders were experiencing performance issues.
- Argos X and AWW report queries are no longer affected by the 'Client Read Timeout' setting.
- Additional resolved issues.

## MAPS Enhancements:

- Expanded support for SFTP key types.
- The Argos Web Viewer may now be disabled and replaced with Argos X in the eLauncher.
- Added the Group Membership field to the SAML Optional Fields.
- New IdP certificate pinning.
- MAPS sessions may now be created via HTTP when a MAPS installation is fronted by a HTTP-enforced load balancer.
- SSL Certificates enable immediate HTTPS without requiring the setup of security keys or certificates.
- SAML datetime formats now support additional time zones.
- Additional enhancements.

## MAPS Resolved Issues:

- Sporadic crashes were occurring on MAPS 64-bit installations.
- Additional resolved issues.

We appreciate the feedback received from all of our users. Our products would not be what they are today without your continued support. If you have any comments or suggestions, please do not hesitate to [open a HelpDesk ticket](#) and let us know.

## MAPS and Argos Updates

---

Some of the changes in this release require an update to MAPS as well as to Argos. We recommend upgrading both products to the latest versions concurrently.

### [Product versions](#)

The latest versions of MAPS and Argos included in this release are:

- Argos mapplet 6.13.1.2222
- MAPS service 6.13.3.2884 / MAPS Config 6.13.1.1586 / Postgres Connector 1.2.0.26 / eLauncher 6.13.0.8 / MapsDBConfig 2.6.1.126

# Installation

---

## 1. Prepare test environment and ensure current backup

We highly recommend installing updates in a test environment before applying them to your production environment. You should make sure that a current backup is available in case of any unforeseen issues. To create a full backup of your MAPS environment, go to the **Server -> Backups** screen in MAPS and click **Backup Now**.

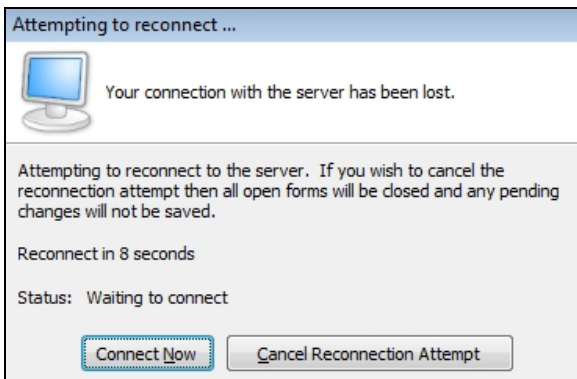
## 2. Check for updates

Click the **Check for Updates** button in the MAPS Config application to view available updates.

It is possible to apply updates when users are on the system; however, to avoid the possibility of losing unsaved work we recommend applying updates during off hours.

## 3. Allow update process to complete

When applying updates to the MAPS service you will be temporarily disconnected from the server:



The update process may take a few minutes to complete. **Do NOT cancel the reconnection attempt or manually restart the server.** You will automatically be reconnected to the server once the update has been applied.

## 4. Verify the latest version is installed

To ensure that you are on the most current version, continue clicking the **Check for Updates** button and applying the updates until no new updates are available.

## Please Provide Us with Your Feedback!

---

As always, we welcome any [feedback or suggestions](#) you may have. We very much appreciate your thoughts and suggestions, so please keep the great ideas coming!

# Argos 6.13.1 Release Notes

---

Argos Mapplet 6.13.1.2222

MAPS Service 6.13.3.2884 / MAPS Config 6.13.1.1586 / Postgres Connector 1.2.0.26 / eLauncher 6.13.0.8 / MapsDBConfig 2.6.1.126

---

## Argos

---

### Enhancements

Area	Description	Issue number
API	DataBlocks in Argos X without an assigned Data Connection will now return a 'Connection does not exist' error message when queried.	MAPS-8327

### Resolved Issues

Area	Description	Issue number
API	Visual Designer report queries with no assigned data connection were returning 'Missing query text' error messages.	AR-8326
API	Folders containing numerous subfolders were experiencing a slow-down in performance when opened in Argos X and Argos Web Viewer.	AR-8308
AWV	Argos X and Argos Web Viewer report queries are no longer affected by the 'Client Read Timeout' setting.	AR-7965
Queries	Incorrect report data was returned when DataBlocks with manual variables containing sub-variables were queried.	AR-8330

**Enhancements**

Area	Description	Issue number
API	Improved the workflow for multi-part MAPSAPI commands in order to optimize session integrity.	MAPS-3855
eLauncher	Added a checkbox to the Server section of MAPS Config to show or hide the Argos Web Viewer launch button in the eLauncher.	MAPS-3843
FTP	Support for Secure File Transfer Protocol keys has been expanded to include additional key types and encryption algorithms.	MAPS-3637
FTP	Support added for PPK 3 key format.	MAPS-3321
SAML	Added the Group Membership field to the SAML Optional Fields menu to allow for use of attributes other than 'memberOf' to be used for SAML authentication.	MAPS-3171
SAML	New 'Use IdP certificate pinning for additional security' checkbox added to enhance security when certificate pinning is not enabled.	MAPS-3681
Server	Added a new checkbox that allows MAPS sessions to be created via HTTP when a MAPS installation is fronted by a HTTP-enforced load balancer.	MAPS-3899
Server	Added the SSL Certificates drop-down to the HTTPS File Server menu, enabling immediate HTTPS without requiring the setup of security keys or certificates.	MAPS-3825

**Resolved Issues**

Area	Description	Issue number
64-bit	Sporadic crashes were occurring on MAPS 64-bit installations.	MAPS-3885
API	Some MAPS and Argos REST APIs were unexpectedly returning results despite insufficient user privileges.	MAPS-3814
SAML	SAML datetime formats now support additional time zones.	MAPS-3769
SAML	SAML users were unable to authenticate if they belonged to a MAPS group that contained Unicode characters in the group name.	MAPS-3916
Server	Access violations were occurring for sessions that had been deleted via logout or a session timeout.	MAPS-3900

# Getting Help

---

For information on using the software, please refer to the product Help, which contains detailed information on all aspects of the product.

If you are having problems with the installation or configuration, you can search our [support site](#), which includes a knowledge base of common issues. If you are unable to find the solution, submit a HelpDesk request with a detailed explanation of the problem you are experiencing.

Please do not hesitate to contact the Evisions HelpDesk if any questions or problems arise. We are here to help you and want to ensure your success.